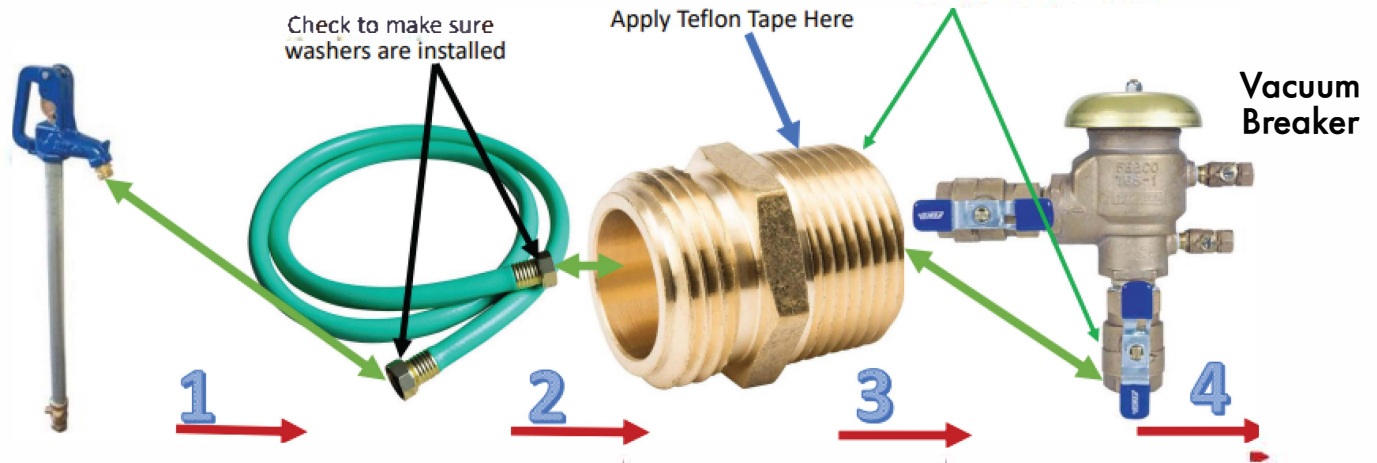
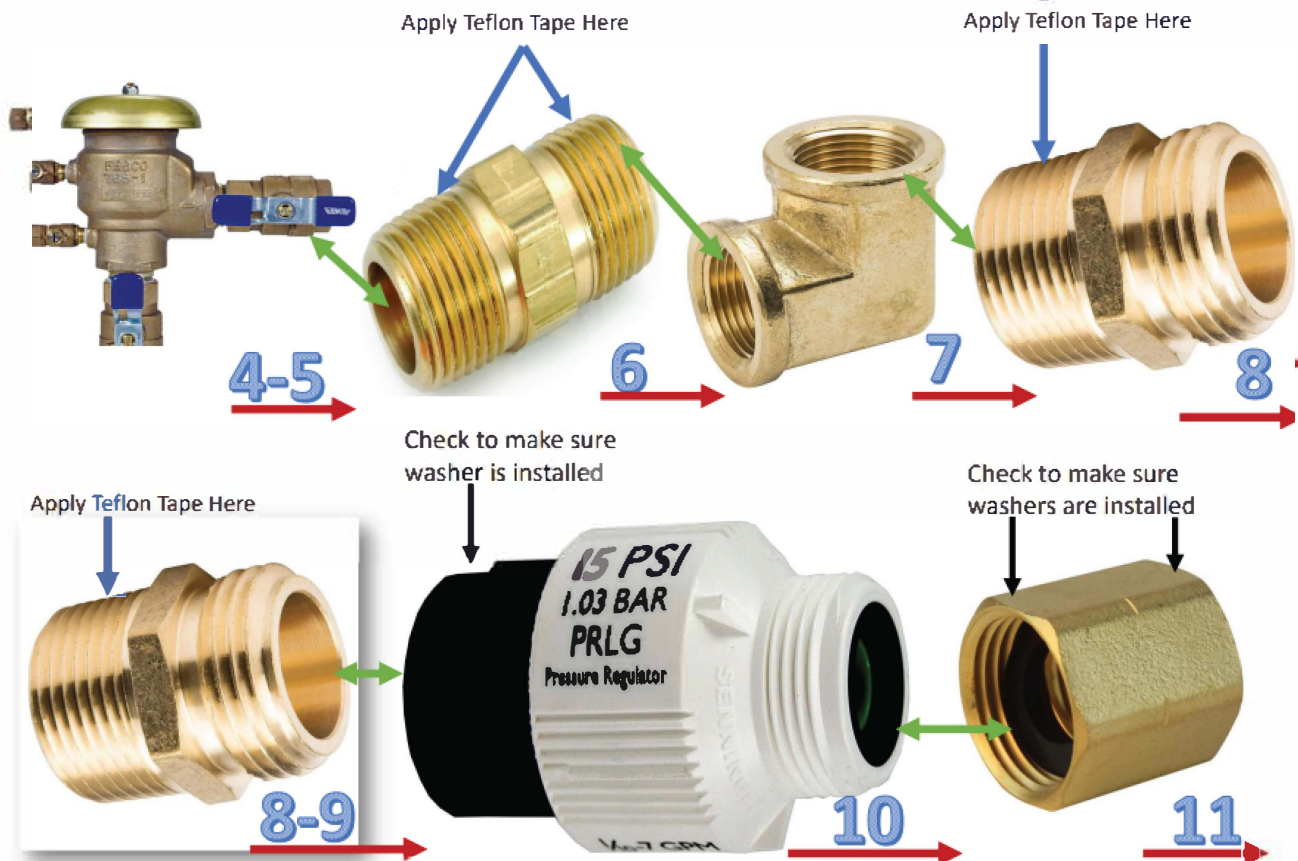


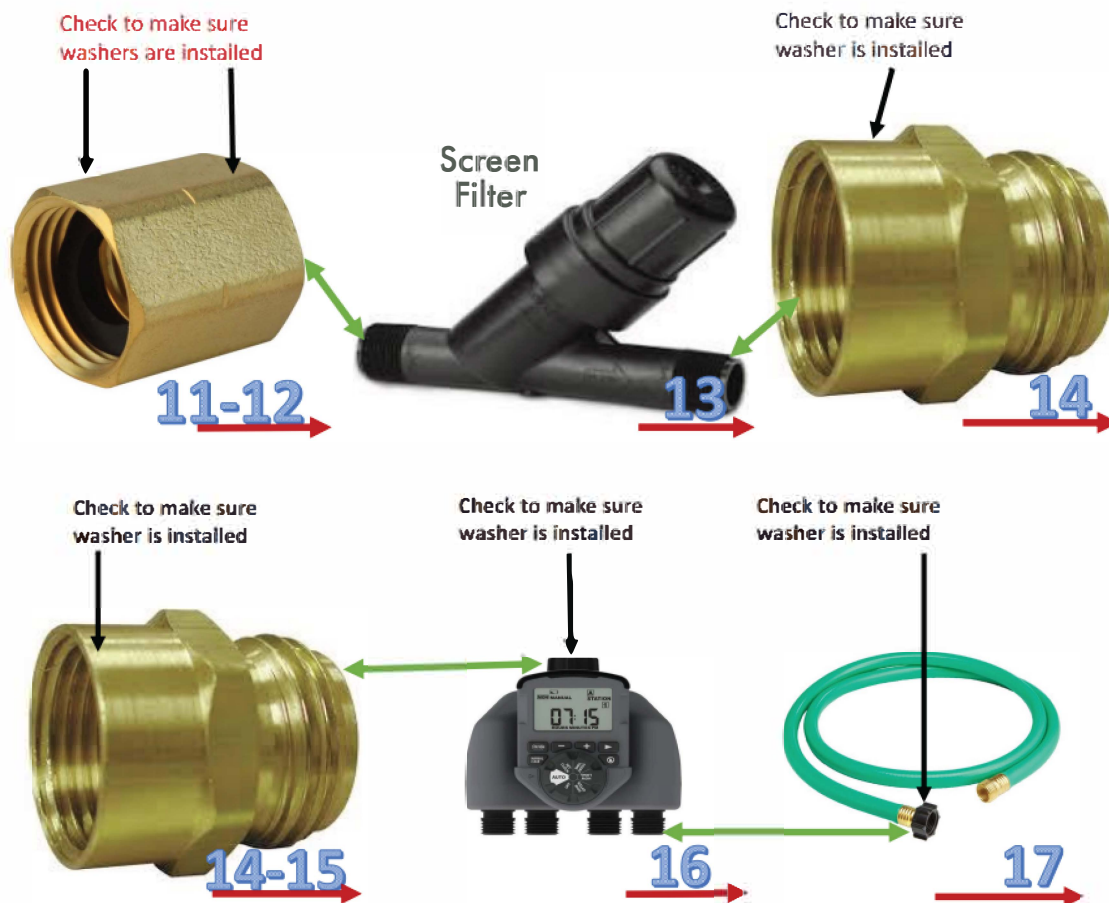
MUNICIPAL SOURCE TO DRIP IRRIGATION KIT INSTALLATION INSTRUCTIONS

Note: It will be easier to attach this fitting to the vacuum breaker first.



Note on the vacuum breaker: When you first turn on the water source, make sure the valves on the vacuum breaker are turned to the "off" (perpendicular) position. *Slowly* open the first valve until a vacuum seal is formed. Then, slowly open the second valve until a vacuum seal is formed. Both valves should be completely open (in parallel position) now. Water may spew from the vacuum breaker for a short period until a vacuum is created throughout the system. If the spewing doesn't stop, turn off the system and check all connections. Contact us if you need more support.





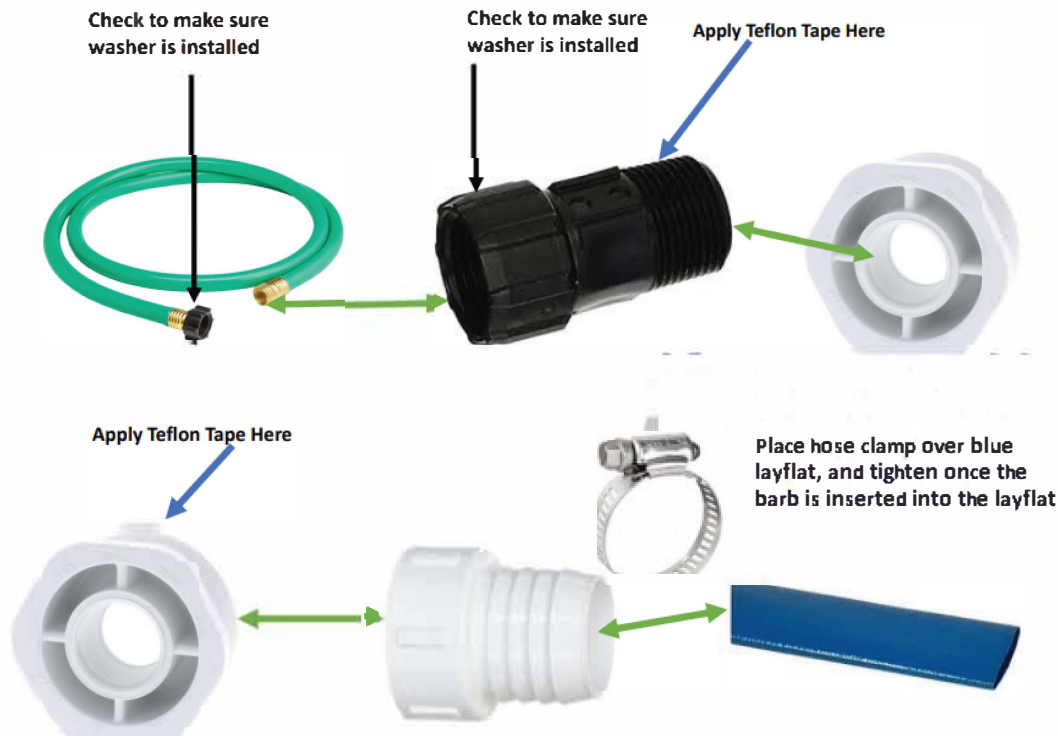
A timer is not included in this kit but can be installed at this point

Use the hose clamps included in your kit to attach the vacuum breaker upright to your hydrant.

You do not need a timer, but a timer is recommended for high tunnel applications in particular, since the crops inside the tunnel remain dry.



ROW CROP DRIP IRRIGATION KIT INSTALLATION INSTRUCTIONS



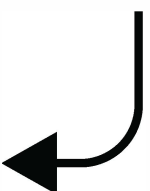
If you have trouble inserting the fitting into the blue lay flat, try adding a little olive oil to the first few ridges on the barb



Remember to have your hose clamp on the lay flat and pushed back away from where the insert will be pushed on to



Your kit includes 10 valves and end caps along with 500 feet of drip tape. You can customize your row length and spacing depending on the types of crops you plant to grow.





Look for the crease along the blue lay flat to cut hole for red handle valves and drip tape

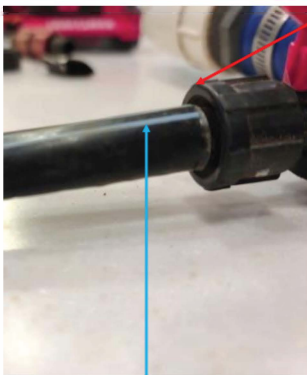


The barb of the Red Handle Valve will go into a hole in the crease. This will allow the valves to sit flat when there is no water in the blue lay flat



Create the holes for the red handle valves with the provided red hole punch

Use the goof plugs included in your kit to plug unintentional or unused holes in your blue layflat

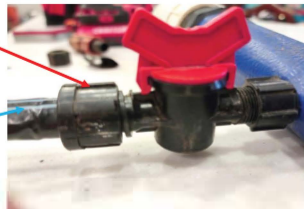


Slide drip tape onto valve

Push on as far as possible



Screw locking nut down onto drip tape



Reminder: The blue lines or emitters should be facing UP



If you cut through your drip tape line you can repair it with a coupler

Once you have everything installed - you can flush your lines- then install your drip tape end plugs



Flush lines for a minute or two and then install the 2" end plug



27



28

2" barb end Plug



Same as earlier

Hose clamp adjustable 1"-3" Place around blue lay flat
Once barb is inserted into lay flat
Slide hose clamp over barbed area and tighten hose clamp